

BLUE TEAPOT

THEATRE COMPANY

Theatre Change Makers

ANNUAL REPORT

2020

Blue Teapot is a multi-award winning Theatre Company, Performing Arts School and Outreach programme for people with intellectual disabilities at the forefront of arts & disability in Ireland.

We are committed to high quality theatre, training and the celebration of creativity.

We do this by unlocking diverse creative potential, bringing freedom of artistic expression through inclusive theatre practise.

A Look At 2020



MESSAGE FROM THE CEO

What a year!

2020 was always anticipated to be significant for Blue Teapot but not quite in the way it ultimately manifested. May 2020 was to be the culmination of a vision to create a Pan European Theatre Festival featuring high quality works of theatre artists and companies with intellectual disabilities. Crossing The Line Festival was our project ambition for Galway 2020 European Capital of Culture.

Central to the vision was a green field site in Father Burke Park including a large theatre tent for performances and a separate Hub tent in which artists, audiences, curious passers-by, theatre programmers and media could meet and soak up the festival atmosphere. The Hub would also function as a venue for the eagerly awaited knowledge talks programmed in our festival.

January began with the achievement of a key goal, the new appointment of a manager for our Performing Arts School in line with a three year strategy to expand the intake of students and meet the demand for this programme. The theatre team continued pre-production work on our festival, including a trip to Malmo (Sweden) to collaborate with our European partners on a framework for the evaluation of the festival, facilitated by The Audience Agency (UK).

A bespoke festival website, marketing and communications plans were created with much thought and consideration given to content, accessibility, European, national and local value. Production crews and venues were assigned for each visiting company including the green field site in Father Burke Park.

We were ever mindful of this once in a life time opportunity to achieve this unique festival vision afforded to us by Galway's designation as European Capital of Culture 2020.

The first week in March, we hosted our Crossing The Line partners in Galway for two days to bring them through festival operations, including site visits for each company to their respective venues and introducing them to our festival team who would be supporting them in May. On the second day it became apparent that alongside a UK royal visit to Galway there was a global red alert on the Covid 19 virus and then everything changed...

Blue Teapot closed its doors by mid-March 2020 on all programmes. Staff worked remotely continuing to try to rescue the festival by exploring if we could move it into the following year. However, by the end of summer it was clear that the pandemic was impossible to predict and reluctantly we had to let the festival dream go.

PANDEMIC IMPACT

I'm very proud of the team who kept vigilant Covid protocols in place to make things as safe as humanly possible while offering contact and creativity under very challenging circumstances. Families and individuals could opt in and out, some people participated remotely through Zoom. Others were happy to engage in person. Keeping a level of normality throughout the rest of the year without doubt kept us all going.

We used the lockdown time constructively, having conversations with our actors and among the team, carrying out a S.W.O.T analysis of all aspects of the company and collectively dreaming into the future. This exploration was shared with our Board in the autumn who gave their input and feedback. This initial process formed the basis for the new Strategic Arts Plan commissioned in 2021.



Looking Ahead to 2021

Fortunately, Blue Teapot had a diamond in the making, originally slated to premiere in Crossing the Line Festival but a stand-alone project: *Into the Dark Woods* the debut play of Charlene Kelly one of our ensemble actors.

With the approval of original funder the Arts Council and Galway 2020 ECoC, we re-imagined the production on a much larger scale, including filming a performance (behind closed doors) and commissioning a documentary on the making of a play - from Charlene's journey as first time writer to the cast and crew bringing it to the stage.

Into the Dark Woods is scheduled to be created and filmed by Easter 2021.

In a very uncertain world, the glue that holds Blue Teapot together remains - theatre.



Playwright Charlene Kelly,
with Dramaturg Eileen
Gibbons, arts journalist
Judy Murphy and Town
Hall Theatre & Black Box
Theatre Manager
Fergal McGrath at the
launch of Crossing The
Line Festival (Dec 2019).

PROGRAMME DELIVERY

We have four programme strands each offering a pathway to a fully realised creative life for people with intellectual disabilities and which meet key objectives stated within the Arts Act 2003, **Galway City Arts Plan**, *Creative Ireland Vision for County Galway*, **Galway City Council Cultural & Creativity Strategy 2018 – 2022**, *Sustainability Strategy Framework 2016 – 2025*. Arts Council Ireland's *Make Great Art Work*:

Objective 1 - Ensure Artists are supported at key stage of their careers

Objective 7. - Create opportunities for increased engagement in the arts by particular communities

- **BLUE TEAPOT THEATRE COMPANY** – We are the only professional, intellectually disabled acting ensemble that trains and performs at the highest level, on the main stages of Ireland's leading arts venues and festivals. Artistic scope expanded to the feature film *Sanctuary*.
- ✓ **Creative Ireland Vision for County Galway: Enabling Creativity in Every Community**
 - 1. Access, Engagement, Participation 2. Equality of Access 3. Environment and Place ,
 - 4. Education & Excellence 5. Inclusivity, Empowerment and 6. Arts and Health & Wellbeing.
- **PERFORMING ARTS SCHOOL** – an accredited provider in the West of Ireland of performing arts training with programmes leading to QQI awards at Level 3.
- ✓ **Galway City Arts Plan Priorities: 1, 4 & 6**



PROGRAMME DELIVERY

Stimulate public interest in the arts

By giving access, engagement and participation in arts and disability organisations:

- **BRIGHT SOUL** – Our long standing, multi-generational programme (founded 1996), born as a simple creative outlet for adults with moderate intellectual disabilities. It maintains an ethos rooted in arts participation and social inclusion. Bright Soul encourages arts participation in a fun and stimulating programme to those whom would find access to a quality arts experience more difficult.

Promote Knowledge, experience and practice of the arts

- **SPARKLE** – A drama programme for teenagers with intellectual disabilities. Now flourishing in to a future Young Ensemble, an artistically led engagement.



Programme Delivery in 2020

PRIOR TO COVID-19 - 13 January – 20th March

Throughout our daily practice, we support and provide for intellectually disabled artists, delivering key objectives in the **Arts Act 2003** and Arts Council Ireland's strategic document – **MAKING GREAT ART WORK 2018 – 2020**.

Blue Teapot Theatre Company

Three day per week programme consisting of classes and training in Drama and Improvisation, Creative Writing, Singing, Dance, Puppetry, Circuit training at Train Station Gym, Film Studies, Art and cultural visits in Galway.

Performing Arts School

Four day per week programme focused primarily of vocational training modules leading to QQI Level 3 minor awards – Art & Design, Music, Drama, Event Participation, Puppetry & Drawing. Galway Adult Basic Education Services provided 2.5 tutor hours per week in literacy classes & GRET B 3 tutor hours per week.

MAJOR ARTISIC PROJECTS

In development – production of new work stage play (*see next slides*).

Advanced stages of production: Crossing The Line Festival
For Galway 2020 European Capital of Culture.



ARTISTIC PROJECTS



MALMÖ, SWEDEN

ARTISTS' RESIDENCY & DISSEMINATION
EVENTS 27- 31 January 2020

Creative Europe project TRASNA NA LÍNE

2020 started with a cultural bang – a visit to Swedish partners Moomsteatern to participate in artists residencies (workshops) and attend dissemination events involving artists & personnel with/without disabilities.

Trasna Na Line is a partnership of 5 of Europe's leading theatre companies making professional touring work with intellectually disabled artists, bringing a profound, shared understanding of the challenges. The project aim is to break down barriers and shift preconceptions about our artists within the wider cultural sector.

Three actors represented Blue Teapot, teaming up with counterparts from Moomsteatern (Malmö), Teatr21 (Warsaw) and Theater Babel (Netherlands).

The visit also built momentum towards **Galway 2020 European Capital of Culture** and our own major event underway - **Crossing The Line Festival** – a Pan-European Theatre Festival of outstanding work made by artists with intellectual disabilities.



Paul, Michael and Val representing Blue Teapot.



Co-funded by the
Creative Europe Programme
of the European Union



CROSSING THE LINE FESTIVAL

A 'once in a generation' Cultural Event

In December 2019, we unveiled our biggest, boldest and most ambitious project to date - Crossing The Line - a Pan-European Theatre Festival of outstanding work made by European artists with intellectual disabilities as part of **Galway 2020 European Capital of Culture**. Our festival and Galway was to welcome 100+ artists, delegates and creative industry experts working in professional, inclusive performing arts.

Of the estimated participants involved, 40% are Irish companies and artists along with European counterparts: Moomsteatern (Sweden), Compagnie de L'Oiseau-Mouche (France), Theater Babel (Netherlands) Teatr 21 (Poland) as well as Mind The Gap (England) and Hijinx (Wales).

Irish artists are very much at the fore, with Galway's Speckled Egg, That's Life and Equinox, Kilkenny.

Opposite: An excerpt from Galway 2020's Bealtaine Programme

A Galway 2020 Commission

Crossing the Line Festival

Creative direction by **Petal Piley**, produced by **Hilary Kavanagh**

Blue Teapot Theatre Company

Crossing the Line Festival is a pan-European festival of outstanding work made by Irish and European artists with intellectual disabilities.

Over 100 established and emerging artists from Ireland, Sweden, France, UK, Poland and Netherlands unite with Blue Teapot Theatre Company in a first of its kind for a European Capital of Culture.

Taking place over four days, across multiple venues, the festival puts artists with intellectual disabilities centre-stage, celebrating their unique and original artistry in a programme of theatre, street shows, dance, film, masterclasses and knowledge events.

The heart of the festival will be the Hub in Father Burke Park. As well as hosting daily events, it's an accessible place to meet with artists and enjoy the experience of Crossing The Line, a festival for everyone.

bluteapot.ie

Crossing the Line Festival is a pan-European festival of outstanding work made by Irish and European artists with intellectual disabilities.

Over 100 established and emerging artists from Ireland, Sweden, France, UK, Poland and Netherlands unite with Blue Teapot Theatre Company in a first of its kind for a European Capital of Culture.

Taking place over four days, across multiple venues, the festival puts artists with intellectual disabilities centre-stage, celebrating their unique and original artistry in a programme of theatre, street shows, dance, film, masterclasses and knowledge events.

The heart of the festival will be the Hub in Father Burke Park. As well as hosting daily events, it's an accessible place to meet with artists and enjoy the experience of Crossing The Line, a festival for everyone.

DATE / DÁTA

19–23 May 2020

VENUE / IONAD

Various

LOCATION / SUÍOMH

Galway City

TICKETS / TICÉID

Each event individually priced, see timetable on the next page



17



20 – 23 May 2020

**CROSSING
EUROPE**

**CROSSING
BORDERS**

**CROSSING
THE LINE**

Crossing the Line Theatre Programme

TUESDAY 19 MAY

8pm **World Premiere, Into the Dark Woods**, Blue Teapot Theatre Company, Ireland, Black Box Theatre

WEDNESDAY 20 MAY

3pm **Into the Dark Woods**, Blue Teapot Theatre Company, Ireland, Black Box Theatre
8pm **a little space**, Mind the Gap and Gecko, England, Theatre Tent, Fr. Burke Park
8pm **Into the Dark Woods**, Blue Teapot Theatre Company, Ireland, Black Box Theatre

THURSDAY 21 MAY

12 noon / 2.30pm / 5pm **Rock Cliché**, Hijinx, Wales, Streets of Galway
6pm **The Water Boys**, Equinox, Ireland, An Taibhdhearc
6pm **Home in the West**, Speckled Egg, Ireland
8pm **a little space**, Mind the Gap and Gecko, England, Theatre Tent, Fr. Burke Park
8pm **The Erased**, Moomsteatern, Sweden, Town Hall Theatre
To be announced, Theater Babel, The Netherlands

FRIDAY 22 MAY

12 noon / 2.30pm / 5pm **Rock Cliché**, Hijinx, Wales, Streets of Galway
6pm **Home in the West**, Speckled Egg, Ireland,
6pm **The Water Boys**, Equinox, Ireland, An Taibhdhearc
8pm **Les Diabes**, Compagnie de l'Oiseau-Mouche, France, Black Box Theatre
8pm **The Erased**, Moomsteatern, Sweden, Town Hall Theatre

SATURDAY 23 MAY

6pm **Revolution That Never Was**, Teatr 21, Poland, Theatre Tent, Fr. Burke Park
6pm **Home in the West**, Speckled Egg, Ireland
8pm **Les Diabes**, Compagnie de l'Oiseau-Mouche, France, Black Box Theatre
Festival Closing Party, Bounce, That's Life, Ireland

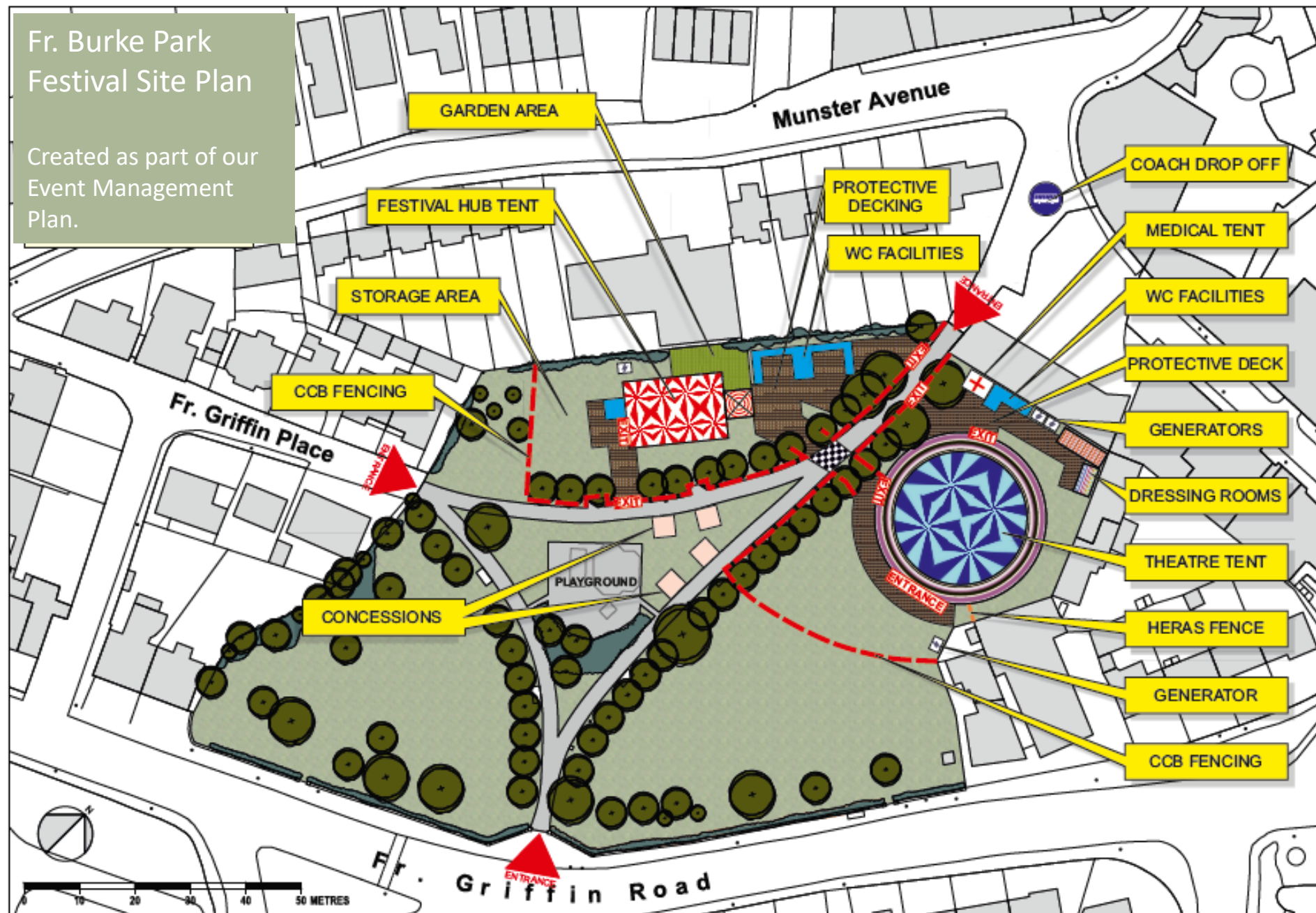


Production Manager Niall Barrett marking out the area for our Theatre Tent, a bespoke 200 seat performance space to be created for Crossing The Line Festival at Fr. Burke Park.

A Festival Hub marquee was also to be installed to host multiple events such as Knowledge Talks, screenings, networking and some dancing too.

Fr. Burke Park Festival Site Plan

Created as part of our
Event Management
Plan.



CROSSING THE LINE PARTNERS' VISIT Galway, 3rd & 4th March 2020

Hosted by Blue Teapot Theatre Co.

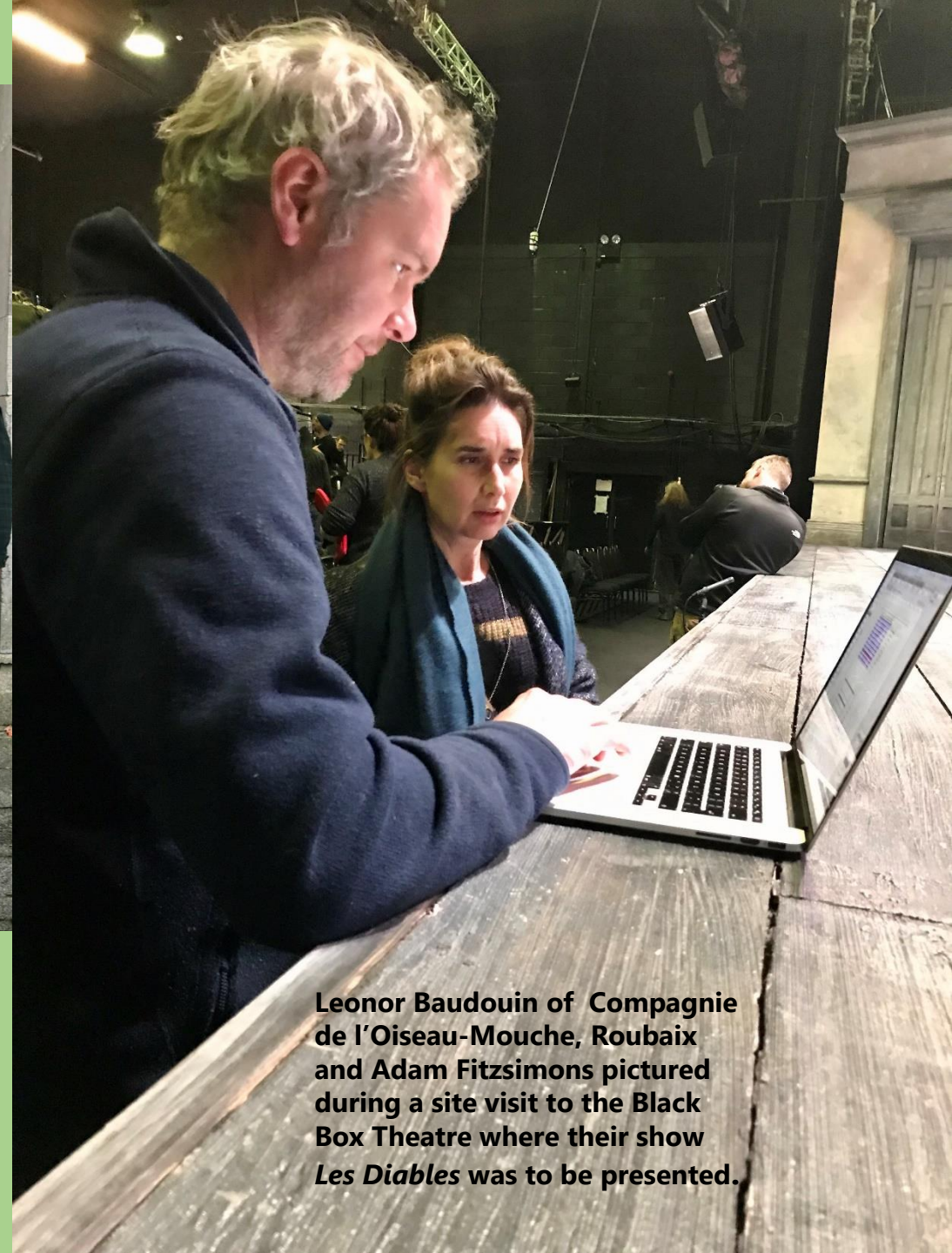
The 2 day visit of key representatives of participant companies from Sweden, France, The Netherlands (and virtually from Poland) was key to building momentum towards **Galway 2020 European Capital of Culture** and our own - **Crossing The Line Festival**.

Each participating venue was visited, with technical production crews giving our visitors the invaluable experience of assessing the size and scope of performance spaces and opportunity to address in person any technical assistance or needs.

The meetings were held at Druid Theatre and proved crucial to finalizing in detail all the production and logistical elements required for putting on an amazing and unforgettable four day event in May 2020.



Theater Babel Rotterdam company members and our production team Mike O'Halloran and Brendan Savage pictured during a site visit to Nuns Island, location of their production *From J. to Jessica*.



Leonor Baudouin of *Compagnie de l'Oiseau-Mouche*, Roubaix and Adam Fitzsimons pictured during a site visit to the Black Box Theatre where their show *Les Diables* was to be presented.



Gecko & Mind The Gap | England
a little space | Theatre Tent Fr Burke Park
20 - 21 May | 8pm

Tickets On Sale Now

Box Office | Town Hall Theatre
Open Mon-Sat | 10am - 7.30pm

tht.ie | 091 569 777

For festival & show info
www.bluteapot.ie

Once in our lifetime



Theater Babel | The Netherlands
From J. to Jessica | Nun's Island Theatre
21 May | 3pm



The Erased | Town Hall Theatre | 21 - 22 May | 8pm
Moomsteatern | Sweden





Les Diables | Black Box Theatre | 22 - 23 May | 8pm

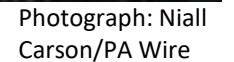
Compagnie de l'Oiseau-Mouche | France





For the past few weeks, the Government and our public services have been focused on the impact of the virus...Yesterday, the World Health Organisation formally described it as pandemic...Our own National Public Health Emergency Team met last night and has issued new advice to Government... We are acting on that advice today."

Come May , just weeks before the grand opening of Crossing The Line Festival, in order to adhere to Government Guidelines, we were forced to make the ultimate and sad decision to postpone the event.





BLUE TEAPOT
THEATRE COMPANY

BLUE TEAPOT
THEATRE COMPANY

KEEPING EUROPEAN PROJECT FLAG FLYING

Despite the loss of Crossing The Line Festival, we stayed in regular contact, building momentum as to what can be re-envisioned.

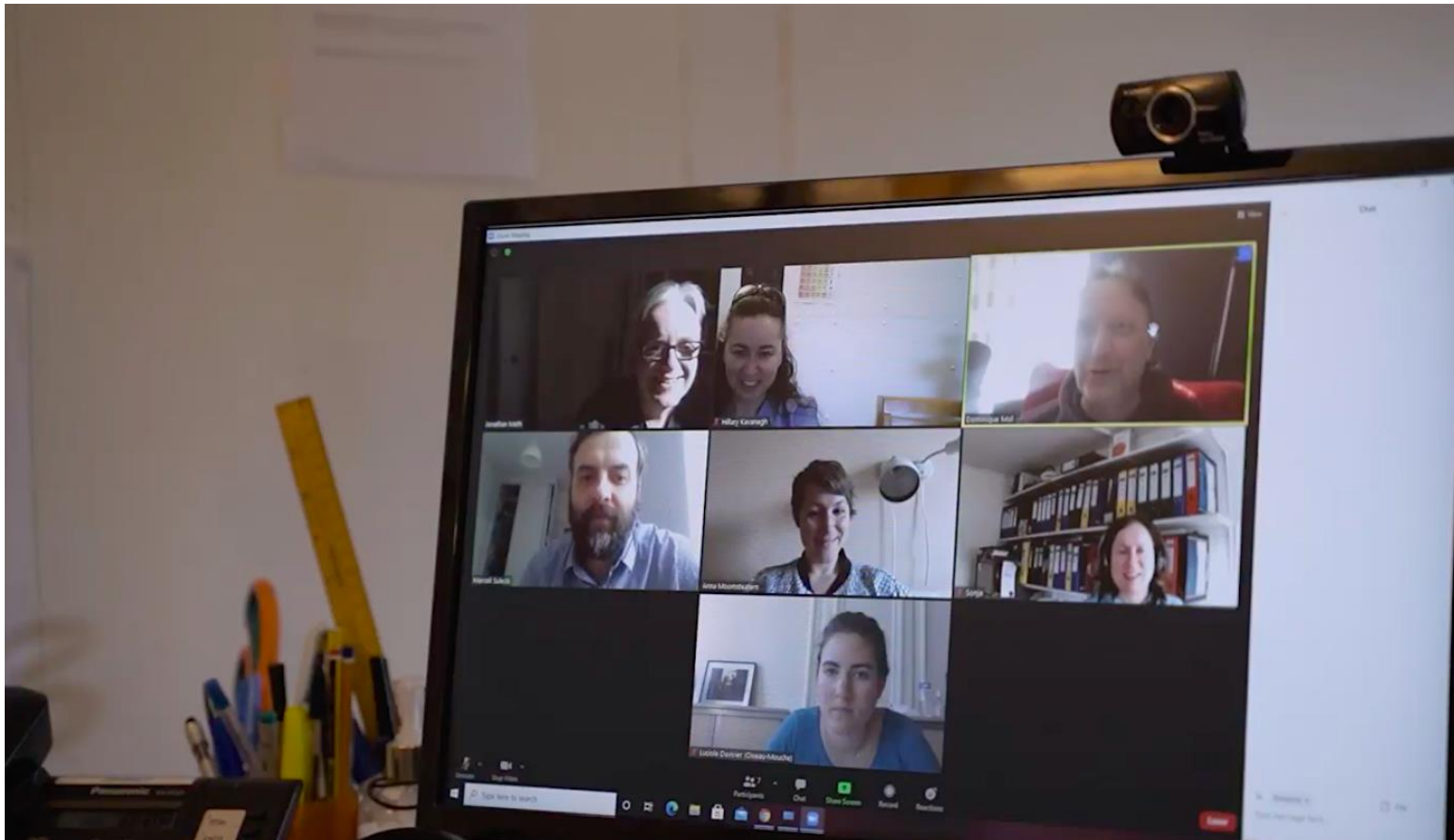
June & July were busy for keeping project fires lit and to determine the ever-changing status of each partner's country situation with the effects of the pandemic. The project reverted back to the partnership, from our major role previously (Galway ECoC/CTL Festival).

Guidance from Project Officer in Brussels with regard scope to resubmit activity timelines and permission to proceed with the parameters of end of Project December 31st 2021 were sought by lead partner Moomsteatern.

Move towards possible online digital festival in 2021 & re-working of budgets to reflect no live festival.

Proposed for 2021

Crossing The Line Digital Festival is to be the focus as well as artists' weeks in Roubaix and Rotterdam.



Zooming with our European partners.

Top row: Jonathan Meth CTL Project Dramaturg, Hillary Kavanagh Blue Teapot, Dominique Mol Theater Babel,
Middle row: Marcell Suleki Teatr 21, Anna Gustafsson Moomsteatern, Sonja Brodie Blue Teapot
Bottom row: Luciole Duvivier Compagnie de L'Oiseau-Mouche.

WORLD PREMIERE

REHEARSALS & PRODUCTION

January – March 2020



Charlene Kelly

INTO THE DARK WOODS

BY

CHARLENE KELLY

Work in Progress

Working copy(21) for workshop

Information:

There are nine members of the cast (there may be less)

We will use sound effects (SFX)

Created in the piece will also be created by the cast.

Of this show please be aware

FROM A BLANK PAGE...

... INTO THE DARK WOODS

We have worked towards an ambition to stage a theatre production written by an artist from within Blue Teapot. In 2017, a pilot project 'The Blank Page' was initiated to meet this creative desire facilitated by playwright & dramaturg Eileen Gibbons. In 2018, this driving objective was established with Charlene Kelly being the artist displaying a definite aptitude.

A modern day fairy-tale, Charlene's play charts into rare territory: The living realm of the woods as an extraordinary invitation into the world as experienced by someone with an intellectual disability.

Throughout 2019, play development continued of 'Into the Dark Woods' with script explorations in workshops with Blue Teapot's theatre ensemble.

March 23rd – 13th September 2020 – Rehearsals and pre-production suspended due to global pandemic and Irish government lockdown/levels of operation.

Dialogue with Galway 2020 ECoC continued to see what could be 're-imagined' as to our continued involvement and future presentation of the show.

14th September: With day centres permitted to fully re-open, resumption of artistic, production & logistical work began, working under strict HSE guidelines.

*This play is very close to my heart. **Into The Dark Woods**, written by Charlene Kelly - one of our renowned actors - is a play with layers upon layers of complexity, hung on a fairy-tale framework.*

As you might expect there is a Prince, a King and a Magical Queen but don't be fooled, this writer's voice roars furiously at being disempowered, cast out and judged yet expresses rare gentleness when encountering frailty in others".

Petal Pilley, Director



INTO THE DARK WOODS *RE-IMAGINED*

The world premiere of Charlene Kelly's play was to be held on 19th May 2020 at Galway's Black Box Theatre.

The ambitious, upscaling move to a larger capacity venue was to be for a more dynamic staging, increased audience capacity and accessible transfer to **The Abbey's Peacock Theatre**, Dublin in June.

Following cancellation of our festival and closure of live entertainment venues in to the foreseeable future, we began 'Phase 2' of a re-imagined project for Galway 2020 European Capital of Culture.

PERFORMING ARTS SCHOOL



STAYING CONNECTED



Performing Arts School Students continue their classes via Zoom. Pictured in top right hand corner are Performing Arts School Co-ordinator Ana Alvarez and Performing Arts School Manager Judith Wolf.

ONLINE PROGRAMME DELIVERY

Alongside the rest of the world, we embraced Zoom technology for keeping our company together 'face to face' in weekly online meet-ups.

Digital Equality: Importantly, it 'upskilled' some of our participants in online communications. We received cooperation from family connections and for those living in group homes, we got support from key workers to enable everyone to get online.

This proved a vital lifeline and the '**highlight of the week**' for almost all, as fed back to us by connections.

Two Performing Arts School students, one living on Inis Mór & another in Athenry (who would usually attend Blue Teapot 4 days per week) were facilitated in QQI course work via assignments.

Special ZOOM events.

Rod Goodall (Drama/Storytelling), Rachel Parry (Dance) & the Train Station Gym Personal Trainers Ronan & Jonny delivered a series of online classes.



PERFORMING ARTS SCHOOL

In September 2019, we had enrolled 8 new students into the Performing Arts School who commenced QQI Level 2 General Learning Major Award – *Introduction to Performing Arts*.

The programme consists of 6 compulsory modules with students learning practical techniques & developing performance skills through 6 component modules.

From September 2020, the students progressed on to Level 3 programme *Foundation in Performing Arts Skills*, a series of component modules to consolidate skills already learnt.



QQI AWARD



**National Framework
of Qualifications**

BACK IN THE GAME

September - December 2020

RESUMPTION OF DAY SERVICE PROGRAMMES.

- ✓ **SOCIALLY DISTANCED REHEARSALS;** Director Petal Pilley working on *Into the Dark Woods* text with the actors 3 months in advance of a usual rehearsal phase, allowing for any Covid-19 related absences of cast/team members.
- ✓ **WELCOME NEW STUDENTS:** 5 new Performing Arts School students joined us along with the return in class of 8 current students.
- ✓ **INTO THE DARK WOODS:** Appointment of creative team consolidated with Dublin set designer Sabine Dargent working on re-imagined design for immersive theatre experience. Production Manager Niall Barrett appointed and working on venue/design logistics.
- ✓ **AUDIENCE DEVELOPMENT STRATEGIC PLAN:** Work continued with The Audience Agency UK in developing a bespoke Audience Development plan, having to revert to a 'plan B' (from what was to be audience feedback & evaluation from live shows).





SEPTEMBER 2020

We met a key strategic objective in 2020 by achieving annual recruitment & enrolment in to our Performing Arts School, with an intake of 5 new students as part of a now annual intake to the school.

Apart from a busy induction in to QQI programmes, time was made for artistic endeavours outside the main curricular.

Damien, Grace, Stanlin, Elizabeth & Catherine got stuck in to exploring creativity in a variety of (socially distanced) ways!



First Year Students (September 2020)

QQI Level 2



Music



(Costume) Art & Design



Theatre Craft

Student Sophie invited by AONTAS (National Adult Learning Organisation) to speak to **Minister for Further and Higher Education, Research, Innovation and Science Simon Harris.**

October 2020



Following this meeting, Minister Harris secured Government Funding - **Mitigating Against Educational Disadvantage** - in which Blue Teapot was awarded €1,891 through Galway Roscommon Education Training Board. The grant was used to purchase student iPads and upskill tutors on using IT equipment.

GOVERNANCE & FINANCE

We understand the need for transparency when it comes to our stakeholders, funders and to reassure public confidence about the way in which their money is managed and where their money will be spent.

Our legal compliance is achieved through registration of Blue Teapot Theatre Company CLG with the Companies Registration Office. Directors and Company Secretary ensure all returns are filed as appropriate with the CRO.

Since 2017, corporate governance has been in compliance of The Governance Code for Community, Voluntary and Charitable Organisations whereby company policies, rules of engagements, sub committees and working practices are formally approved.

In 2019, we began working through the mandatory Charities Governance Code for the Charities Regulatory (Ireland). This process was completed in 2020 with the only major change to the existing structure was the dissolving of the Fundraising Sub-Committee. Fundraising is now the on-going concern for the whole Board.

In 2020, we had reached a staff team of 7 part-time employees and supported by 2 part-time Community Employment Scheme workers.

The Board remained intact from 2019, with the same 6 Directors.



**An Rialálaí
Carthanas**

**Charities
Regulator**

FINANCIAL STATEMENT 2020

A close-up photograph of a hand holding a white ceramic piggy bank. The piggy bank has a simple, friendly face with two small black dots for eyes and a large, rounded snout. The hand is positioned at the bottom of the frame, with fingers gently gripping the piggy bank. The background is blurred, showing what appears to be a person's arm and some indistinct shapes.

Full set of accounts are audited annually by **MK Brazil, Waterford** and published each year along with this Annual Report on our website **blueteapot.ie/governance**

2020 turnover was **€421,497**, reflecting increased output, significantly due to involvement in **Galway 2020 European Capital of Culture** with Crossing The Line Festival and associated artistic projects.

Strategic growth for **Performing Arts School** led to lease of a dedicated building (taken Dec 2019), increase in student numbers and expansion of staff team in 2020.

PAS now recruits annually with September intake of students each year, instead of every three years previously.

Local authority & government grants on offer in response to the Covid pandemic were sought to assist with unforeseen expenditure in adapting to remote working & online programme delivery.

2020 Funders, Fundraising & Donors

We work in a marginalized sector, theatre & performing arts, a sector badly impacted by the loss of live performances throughout 2020 due to the pandemic. The loss of *Crossing The Line Festival* alone greatly affected livelihoods for many freelance artists, producers, technicians and auxiliary services.

In 2020, Blue Teapot was nominated as ‘Charity of The Year’ by Galway Westend Traders’ Association which comprises award winning entertainment, dining and retail establishments, amongst others, with national prestige. Being the main beneficiary of their fundraising activities in 2020 was to be truly significant coupled with Galway being European Capital of Culture.

The estimated loss of fundraising donations to us is incalculable.

COVID RESPONSE

Through Galway City Council, the *Local Community Development Committee* contributed €778 for COVID related expenses – purchases of sanitation & hygiene equipment for bathrooms and throughout the premise, while Galway City Council’s *Covid Emergency Fund* awarded €1,000 towards the purchase of a laptop for staff remote working. Under their ‘Keep Well’ scheme, we were awarded €400 for online delivery of physical fitness classes from Train Station Gym, while Galway City Council’s *Healthy Ireland/Community Mental Health Fund* awarded €1,280 for live, in-person gym classes (deliverable in 2021 due to 2020 lockdowns).

The Community Foundation for Ireland, Government of Ireland with RTE Does Comic Relief awarded us a total of €6886 from 2 funding strands: *Demand for Digital* €2027.99 and *Adapt & Respond* €4855 (grants received in 2021).

HEARTFELT THANK YOU

Our gratitude goes to all funders & individuals who enabled our service provision throughout 2020, in particular major funding partners Brothers of Charity Services Ireland (West), Ability West, Galway Roscommon Education and Training Board and a philanthropic funder. Arts funding supported primarily by the Arts Council of Ireland for *Into The Dark Woods*, Creative Europe small co-operation grant and Galway 2020 organisation for funding our Capital of Culture projects.



Socially distanced workouts at Train Station Gym, Munster Avenue – partner of Galway West End Traders Association.

COMPANY INFORMATION

Blue Teapot Theatre Company, Munster Avenue, Galway, Ireland.

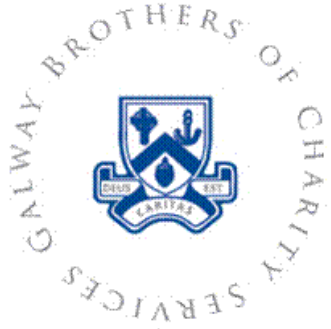
CRO: 471758
CHY 18643 / CRN: 20071912
REVENUE: 9709656J

DIRECTORS	Fiona Coffey (Chair), Sean Conneally (Secretary), Carol Browne, Gerardine Lally, Siobhán Ní Ghadhra and Dean Kelly.
CEO & ARTISTIC DIRECTOR	Petal Pilley
EMPLOYEES	Sonja Brodie, Hillary Kavanagh, Ana Bella Alvarez, Cheryl Hudson, Jason Scott and Judith Wolf
EMPLOYMENT SCHEME	Rueben Parry, Michael Patrick Breen.
VOLUNTEERS <i>(pre-pandemic Outreach projects)</i>	Rebecca Malone, Niamh Hennessey & Leticia Cavicchioli
KEY PROFESSIONAL SERVICES	Bernie O’Brien (Chartered Management Accountant), Figures Bookkeeping (Payroll services), MK Brazil (auditors) Cathleen Hartnett (QA Services), Federation of Voluntary Bodies (pension).
TUTORS <i>(freelance)</i>	Charmian Goodall, Rod Goodall, Aine Lawless, Dave Donovan, James Riordan, Lali Morris, Eileen Gibbons, Fiona O’Dea, Rachel Parry, Sinead Hackett, Train Station Gym and Catherine Collins.
COMPANY MEMBERS	Judith Higgins, Dave Donovan, Lali Morris, Claude Madec, Noelle Burke, Ann Loughney Anne Geraghty, Michelle Kenny and Eamon Loughrey.

2020 FUNDERS

We greatly appreciate the endeavors by funding agents, organisations and each individual who choses to nominate Blue Teapot as the beneficiary of their efforts. No matter how small or large the donation, we are so grateful.

Heartfelt thanks to you all.



A person with long, straight blonde hair is seen from behind, wearing a blue t-shirt. The t-shirt has the website address "www.bluepot.ie" printed in white, bold, sans-serif font across the upper back. The background is blurred, showing other people and what appears to be a classroom or meeting setting.

www.bluepot.ie