



**Blue
Teapot**

Theatre Company

**ANNUAL
REPORT
2025**



CONTENTS

3 CHAIRPERSON'S STATEMENT

5 YEAR IN NUMBERS

6 THEATRE COMPANY

7 NEW WORK IN PROGRESS

10 RETURN OF *FAIRY TREE*

14 STEPPING OUT OF THE SPOTLIGHT

15 PERFORMING ARTS SCHOOL

16 NEW STUDENTS

18 STUDENT FILM – *DON'T BE SO WINEY!*

20 QQI AWARDS

24 CULTURE NIGHT – CELEBRATING 15 YEARS OF PAS

27 GRADUATION

29 COMMUNITY THEATRE PRORAMME

30 BRIGHT SOUL – *LOWRY LYNCH*

34 SPARKLE – *THE KING'S CALL*

37 WORKABILITY

41 13 YEARS LATER

42 IRISH EQUITY & SPOTLIGHT

43 COMPANY BUSINESS

44 GOVERNANCE

46 FINANCIAL STATEMENT

47 FUNDERS & DONORS

50 FRIENDS

51 STRATEGIC ARTS PLAN

54 2025 FUNDERS

55 2025 COMPANY

56 CAPTIONS & CREDITS

58 THANK YOU



CHAIRPERSON'S ADDRESS

Another year has flown by and it gives me great pleasure to review and reflect on the work of Blue Teapot Theatre Company in 2025. I continue to be amazed at the commitment, enthusiasm, talent and creativity of our actors and students. There were many highlights in the year.

Fairy Tree was another knock out success with six sold out shows. As well as being a funny and heart warming story and fairy tale, the partnership and connections built with local schools has been very rewarding.

We had a great attendance at this year's Culture Night where we highlighted the success story of fifteen years running of the Performing Arts School. There was a brilliant montage of photographs highlighting the work of all participants over the years and a showing of the many creative films made by the students.

Due to popular demand, we extended our Community Theatre Programme with two more Sparkle and Bright Soul groups which continues to bring great joy to all its participants. Our Workability programme continues to build new work experiences and opportunities for the actors and students. I was particularly heartened by the stellar performance of two of our actors - Kieran Coppinger and Charlene Kelly - in Christian O' Reilly's outstanding play *Finding Sophie*, produced by Decadent Theatre Company, which was a follow up on the story told in the play & film versions of *Sanctuary*.

THANK YOU

I would like to thank my fellow Board members for their ongoing work and diligence, sincere gratitude to you all. Thank you to our wonderful, dedicated staff team and tutors who continue to excel in supporting the creative work of our actors and students and putting the vision of Blue Teapot into action.

I would like to thank everybody who make up the Blue Teapot Theatre Company community; parents, families, local neighbours and supporters, volunteers, our local public representatives and councillors, and above all, the actors and students themselves who continue to shine and sparkle.

To our funders, partners and supporters, I sincerely thank you for believing in our work and enabling us to build and challenge us to achieve more.

I would like to acknowledge the ongoing support of Brothers of Charity Services Ireland, (today known as Corlann), Ability West, HSE, GRETB, The Arts Council, Galway City and County Councils Arts Offices, Pobal and the many sponsors and individuals who contributed to our funding in 2025.

We look forward with anticipation and confidence to continuing and developing our work in 2026

Sean Conneally



YEAR IN NUMBERS

2

New work in progress

1

New Ensemble Member

80%

Increase in new audiences

1

One new film project

23

Arts educators & practitioners engaged

10

Students made their screen debut

100%

QQI modules passed

16

Students started WorkAbility

220%

Increase of new website users

40%

Increase in grants

6

New employees

3

New corporate friends

2

New board members

39 of 180

Mortgage payments made



Theatre Company

A professional ensemble of actors who work to radically transform theatre practices by telling stories through the lens of disability.

We are committed to ensuring that the contribution our artists make to Ireland's cultural life is recognised, valued and understood.

Ensemble in 2025: Patrick Becker, Paul Connolly, Kieran Coppinger, Jenny Cox, Cormac Crawford, Valerie Egan, Michael Hayes, Charlene Kelly, Grace O'Brien, Cathal Scott Reynolds, Jack Walsh, Roisin Walsh.





First phase of a new theatre work in progress took the ensemble from the Munster Avenue rehearsal room, out into the rugged coastlines of the Wild Atlantic Way and the Burren, Co. Clare.

Directed by Petal Pilley, with movement coach Fionnuala Doyle Wade and musician Donal McConnon, this discovery phase took place over four weeks.

Following the research and development phase, in 2026 we plan to move into a theatre creation phase with (working title) 'Fools & Idiots' exploring the status of fools and jesters with intellectual disabilities in medieval society. The ideas and artistic responses that emerged with dramatic value will be the springboard to create a new piece of theatre.





RETURN OF *FAIRY TREE*

Written & Directed by Rod Goodall



Fairy Tree began in 2024 as a multi-phase initiative combining theatre and inclusive workshops, led by our professional actors, to national schools across Galway City and County. It is an interdependent project that fosters creativity and collaboration between our actors and children with/without disabilities and those who are neurodivergent.

The impetus originally came from conversations with the actors to inform our Strategic Arts Plan and capture their artistic ambitions. Several expressed they wanted to create theatre for children with one actor saying that he'd never seen anyone like him on stage as a child.

A short story written by Rod Goodall, about the presence of the fairy realm in our everyday lives, was the spark for a new piece of children's theatre. With the seeds sown, a new play was commissioned, and with it, development of companion workshops to be delivered by our actors to schoolchildren with/without disabilities and those who are neurodivergent.

A BLUE TEAPOT THEATRE COMPANY PRODUCTION

WRITTEN & DIRECTED by ROD GOODALL

fairy tree

BACK BY POPULAR DEMAND

In the autumn, we prepared for another showing of *Fairy Tree*, with six shows performed in December 2025 - three day time shows aimed at schoolchildren and disability services and three general audience shows - all of which sold out.

We provided **FREE SENSORY TOURS** prior to evening shows. A sensory or 'touch' tour is a tactile exploration of the geography of a theatre space, the stage, selected props, costumes and sound/light effects that would be encountered during a performance.

We were the first arts organisation in Galway to present sensory tours as an optional audience support. It transpires, that for some of our patrons, it was their first time to venture into a theatre.



10-12 DEC 2025 7PM

BLUE TEAPOT THEATRE, MUNSTER AVENUE, GALWAY

TICKETS: bluteapot.ie



Roisin Walsh (theatre company) and Sinead Molloy (performing arts school), leading a Sensory Tour of *Fairy Tree* – December 2025

What the Audience say

"It was just magical. Absolutely beautiful. The effects, the sentiment, the atmosphere, the visuals, the sounds, gorgeous, just so warming. And really interesting. The Tooth Fairy, the origins, the agreements and contracts for everything we know about fairies that are parts of our lives now."

"It was really gorgeous and I'm not a fan of Christmas and even a Grinch like me, my heart was so full leaving it, it was absolutely stunning."

"But most especially, it was about being generous and kind and loving and inclusive. And that message resonated so beautifully."

"My heart is totally full after seeing that. I love the fact that they related to things from our old Celtic traditions and about the spruce and the whole story about how fairies are so part of our heritage and folklore."

"It's a totally brilliant show. And I really, really loved it, so much, so much."

"I'm already thinking about bringing all the nieces and the nephews to it for Christmas. They'd all love it.
Oh, is it all sold out?"

"What I thought was really interesting, in the world that we live in now, there was a message for everybody."

"It was brilliant. I'd absolutely recommend it to people. It was amazing."



STEPPING OUT OF THE SPOTLIGHT

In 2025, we said a deeply fond farewell to two of the stalwarts of the theatre company – **Patrick Becker and Emer Macken**. After over two decades in our ensemble, both actors decided to independently end their stellar careers and exit stage right.

Over the course of their time with us, Emer and Patrick have had the opportunity many (including non-ID) actors don't get to experience, that of working with some of Ireland's finest creative talent - theatre professionals, playwrights, guest directors, designers and more.

Unforgettable performances

Who can forget Patrick chewing the scenery as the feisty Andrew in *Sanctuary* or making us repeatedly laugh as Bottom in *A Midsummer Night's Dream* or reinventing Roy Orbison's *Pretty Woman* in 'ID'. Emer's Sandy stole the show every time, as well as a kiss, in *Sanctuary*, and captivated audiences as the Fairy Queen in Charlene Kelly's *Into the Dark Woods*.

Behind the Scenes

Every day Emer and Patrick came to work, they brought joy, laughter and commitment. No matter who or what was on the weekly timetable, both dedicated themselves to training and live performance.

Their legacy is that they will forever be part of Irish theatrical history.



Performing Arts School

An accredited provider of vocational training for people aged 18 and over with intellectual disabilities. Founded in 2010, it was specifically set up to address the needs of those learners who wished to gain formal training and certification in QQI creative modules.

Our ethos is to give students quality arts experience of equal importance to required learning outcomes. Tutors are subject matter experts with a wealth of knowledge in creative arts – theatre directors, actors, artists, musicians and designers – along with specialists in advocacy and life skills.





WELCOME NEW STUDENTS

FÁILTE ROIMH CLASS OF 2025

Each year we enroll new students into our Performing Arts School. In September, we were delighted to welcome Aaron, Maire, Patricia, Mihilo and Mikey into the first year.

For some students, a progression route into the School comes via participation in the Community Theatre Programme, as is the case with Aaron (Bright Soul), Mikey and Maire (both from Sparkle).

The five students start their training with *Introduction to Performing Arts*, a QQI Level 2 General Learning Major Award programme. They will also enjoy visits to Galway's cultural amenities and attend live theatre, galleries and arts events.

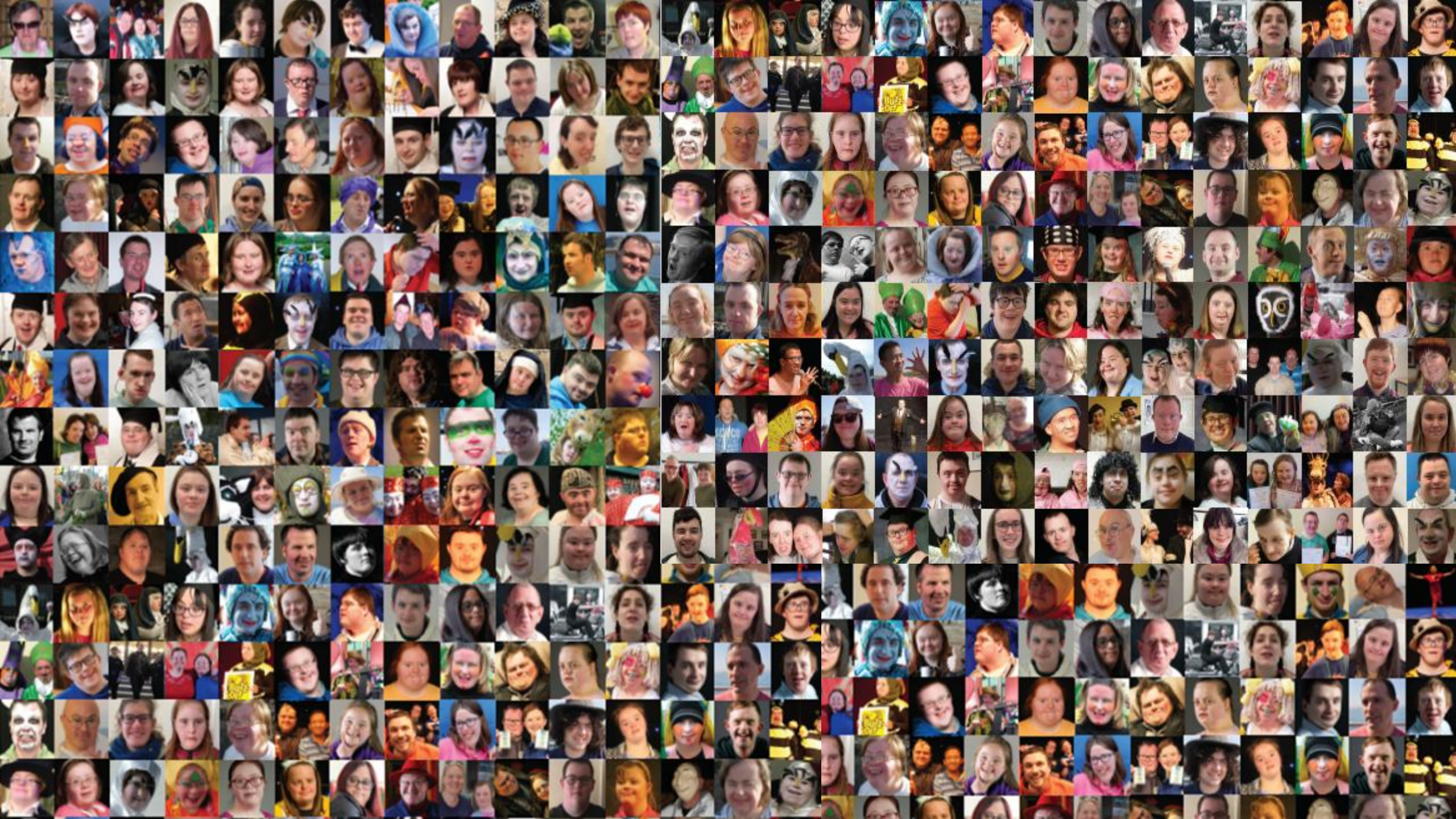
Second and Third Years

In addition to QQI Level 3 programme, second and third-year students have a range of job readiness classes as part of the WorkAbility: *Inclusive Pathways to Employment Programme*. Life Skills modules and performance-based classes take place including the creation of a short film project.

Reaching a Milestone of Fifteen Years

The Performing Arts School was born out of the fact that in 2010 there was no quality, accredited performing arts training for people with intellectual disabilities anywhere in Ireland. So, we committed ourselves to establishing a vibrant programme, facilitated by some of West of Ireland's finest theatre arts practitioners, to start levelling the playing field. In September, we celebrated this milestone and the achievements of forty-five students across fifteen years, by holding an exhibition of works for Culture Night.





FILM PROJECT

DON'T BE SO WINEY!

'To make a short comedy film' was the answer from Performing Arts School students when asked what they wanted to do for their 2025 Performance project. With tutor/Director Michael Patrick Breen, the students developed original characters, created backstories and brainstormed storylines.

MISUNDERSTANDINGS AND A PRICED BOTTLE SPARKS CONFLICT!

'Don't Be So Winey' follows several intersecting groups whose ordinary day –returning from travel, office small talk and a chaotic Zumba class– unexpectedly collides during an evening out at Rouge Restaurant. Romantic jealousy, workplace banter, physical comedy and social mishaps escalate as wine flows.

Seventeen teaching and pre-production sessions covered every critical stage; from writing and rehearsing to meticulous planning. By immersing themselves in every aspect of the filmmaking process, the students were empowered to bring their visions to life. The resulting comedy caper '*Don't Be So Winey!*' was filmed at several Galway locations, with students involved on and off camera.

Grace Hannon and James Wallace on location for '*Don't Be So Winey!*'



Vins à Emporter

Desserts

- crème brûlée (6)
- Apple tart
- Coque eclair
- Dôme chocolaté mûre
- foie - gras
- Amand & apricot
- Chocolat + hazelnut + raspberries
- Lemon meringue tart
- fruit & almond tart
- Double eclair
- Amand & blackberry
- Chocolat spatch-caramel

NIMMIOS





QQI AWARD

Congratulations to Aidan, Anna, Elva, Lauren, Holly and Ciaran, pictured with QQI External Authenticator Anne Higgins. Each students successfully passed all modules in QQI Level 2 General Learning Major Award / Introduction to Performing Arts.





ARTIST: Elva Fray





CULTURE NIGHT OÍCHE CHULTÚIR CULTURE NIGHT OÍCHE CHULTÚIR CULTURE NIGHT

25 • FRI 19 SEPT 2025 • AOINE 19 MEÁN FÓMHAIR 2025 • FRI 19 SEP



19:00 EXHIBITION - *Blue Teapot's Performing Arts School celebrates 15 years*
21:00 Blue Teapot Theatre · H91 FVF8



A photograph of a diverse crowd of people at an indoor event. In the foreground, a woman with red hair is seen from the back, looking towards a man in a black shirt. To the left, a man in a green jacket and sunglasses is partially visible. In the center, a woman with reddish hair is gesturing while talking to someone. The background is filled with other attendees, and a television screen in the upper left corner displays a news broadcast with a man in a blue shirt and a person in a high-visibility vest. The lighting is warm and focused on the people.

CULTURE NIGHT 2025

Friday 19 September

We were delighted to welcome the public to a special exhibition of works, marking fifteen years of our Performing Arts School and the achievements of forty-five graduates who have acted, sang and danced their way through the QQI accredited programme.



City of Galway Mayor Mike Cubbard with Jack Walsh, Grace Hannon, James Wallace, Caoimhe McMahon, Andrew Quinn and Maria Hannon at a graduation ceremony at The Mick Lally Theatre (November 2025).





NEW ACTOR JOINS THE ENSEMBLE

Graduation Day for student Jack Walsh also marked his progression into our theatre ensemble after previously held auditions.

We look forward to seeing Jack on stage in future theatre productions.

Presenting a Tutors Award to Jack for achievements in Drama, was Rod Goodall who retired from teaching Drama in the Performing Arts School. Rod continues to work with and direct the theatre ensemble.

Thank You Rod for all you've given to the Performing Arts School and inspiring next generations of artists.



Community Theatre Programme

Community Theatre Programme has two distinct strands: **BRIGHT SOUL** caters for adults 18+ years and **SPARKLE** caters for youth 12 – 17 years who are curious about performance.

Participants enjoy fun, theatre workshops with spring and autumn terms of approximately ten weeks each. Both projects can be a pathway into the more formal training environment of the Performing Arts School.

PERFORMANCE **BRIGHT SOUL**

Lowry Lynch, A Tale of Secrets!

Adapted & directed by **Midie Corcoran**

Once a year, on the Summer Solstice, King Lowry Lynch gets a haircut. However, the King is keeping a dark secret and after each haircut, something strange happens. After many years of haircuts, there is only one barber called Barney left in the kingdom.

'Lowry Lynch' premiered in our theatre on Monday 16 June after a 10-week rehearsal process as part of Bright Soul's spring term. Adapted by Director Midie Corcoran, Lowry Lynch is based on an old Irish story, a similar one found also in Indian folklore. It is a show about being different, and how honesty is indeed the best policy.

"Working with the Bright Soul performers has been the highlight of my year. Collaborating and devising together has brought so much fun, joy and laughter because these performers are all heART." – *Midie Corcoran.*

The cast of eleven players were supported by high production values and featured live musical accompaniment from harpist Áine Sheridan and musician Donal McCannon.









SPARKLE



A SPARKLE PRODUCTION

THE KING'S CALL



11.30AM SATURDAY
8 NOVEMBER 2025
BLUE TEAPOT THEATRE
MUNSTER AVENUE

WELCOME

Sparkle shines again with this performance of 'The King's Call' devised with the cast and directed by Sinead Hackett. It is with great pleasure that I welcome you to this performance by our talented Sparkle youth. Enjoy!

Petal Pilley, Artistic Director

DIRECTOR'S NOTE

This was truly a collaborative experience but at the heart of it is each and every individual member of Sparkle - their personalities and imagination shining through. Our production was devised & crafted through the collaborative efforts of the creative dream team over the last 10 weeks. We hope you will have as much fun and laughter as we did!

Sinead Hackett, Director.

About The King's Call

As the King calls upon his villagers to embark on a quest to slay The Ender Dragon, the children remain safely behind in survival world at the local boarding school under the careful watch of Mr Hughes and his staff.

What could possibly go wrong?

Join us on this madcap adventure, brought to life through the rich imaginations and creativity of Sparkle.







Workability

Pobal's WorkAbility: *Inclusive Pathways to Employment Programme* is a five-year programme co-funded by the EU Employment, Inclusion, Skills, and Training Programme (EIST) 2021-2027 and the Department of Social Protection (DSP).

The Programme aims to support people with disabilities aged 16 and over who are currently not work ready and/or are distant from the labour market in gaining access to employment/self-employment.



WORK EXPERIENCE

In April 2025, we partnered with the internationally renowned **Druid Theatre Company** to support inclusive work practices and provide invaluable work experiences to adults with intellectual disabilities.

The partnership with Druid gave third year Performing Arts School students the real-life experience of working in a busy arts venue such as Druid's own venue, The Mick Lally Theatre. This is to prepare students for working within many aspects of the arts sector and interfacing with a wide cross section of audiences.

Students took on many front of house tasks, welcoming theatre patrons, checking tickets, showing patrons to seats, assisting in the bar, serving drinks, handling cash and card payments. This took place across several nights, with different events, productions and audiences.

We thank Druid for supporting our WorkAbility programme and helping to create a Galway arts sector that is welcoming to all.



Caoimhe McMahon, Jack Walsh and Maria Hannon at Druid's Mick Lally Theatre



Andrew Quinn at the Galway Uke Festival



Jess Howard in charge of the bar at The Mick Lally theatre.



Front of House duties The Laughter Loft Early Edition, The Kings Head



Sinead Molloy working the till



Caoimhe McMahon interviewed on RTÉ News by Pat McGrath, RTÉ Western Correspondent about the partnership with Druid Theatre Co.

SENSORY TOUR GUIDES

As part of Fairy Tree's theatre production and our Workability: *Inclusive Pathways to Employment Programme*, Performing Arts School students Jessica, Aoibhín, Sinead, Niamh and Roisin (theatre ensemble) hosted the pre-show Sensory Tours, along with mentor Dave Donovan.

Sensory Tours can be beneficial to theatre patrons who are blind, visually impaired, on the autistic spectrum, non-verbal, have intellectual difficulties or for those who process differently.

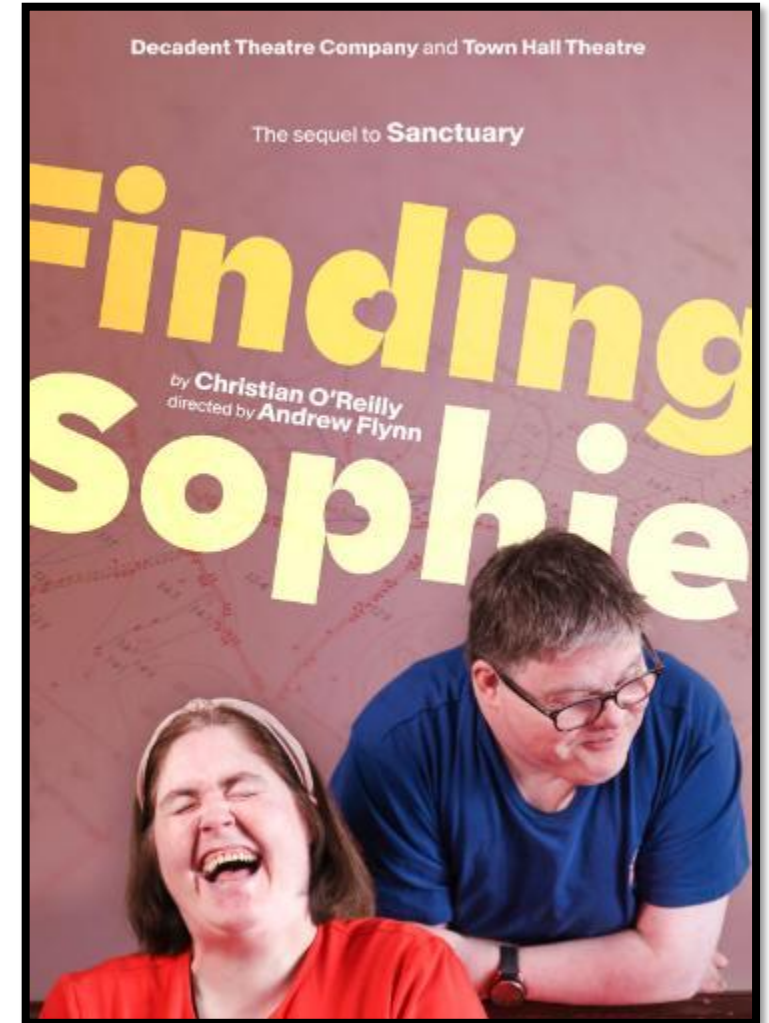
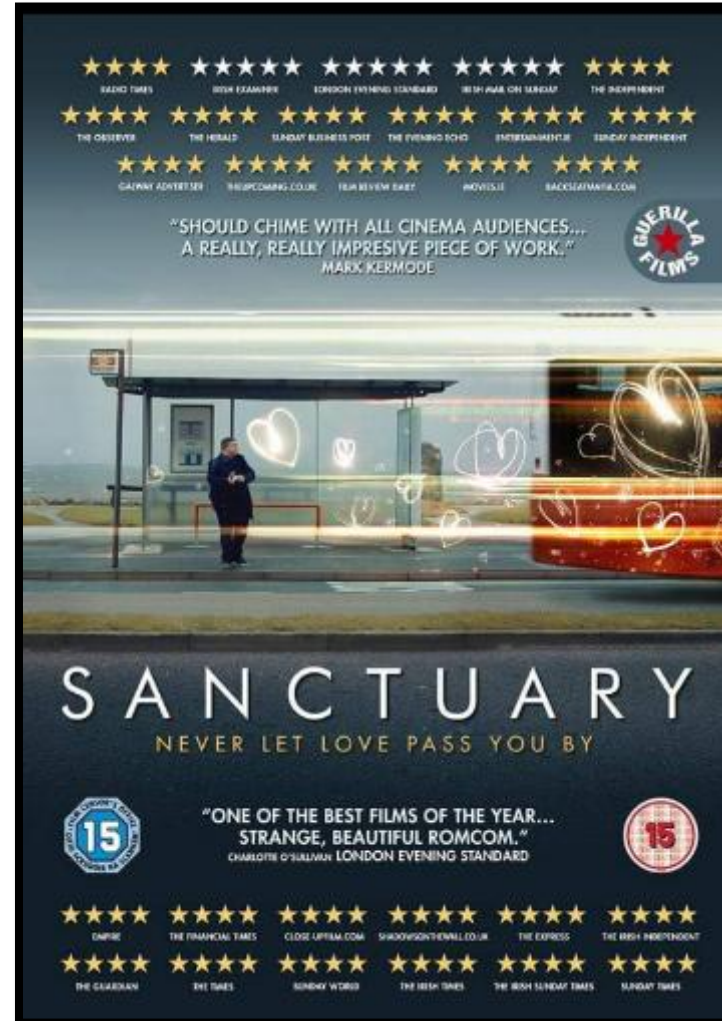
Guides outlined the story of the show, answered questions and guided participants through the tour in a relaxed and welcoming manner.

Training as Sensory Tour Guides, the students brought an added dimension of authenticity to the experience for patrons.



Thirteen Years Later...

In 2012, we commissioned playwright Christian O'Reilly to produce a new dramatic work about the personal lives of adults with intellectual disabilities within romantic relationships and the societal and legal barriers they faced. The resulting *'Sanctuary'* premiered in October and just a few years later, the stage version transformed into a feature length film which premiered in Irish cinemas and screened at international film festivals. Today, *Sanctuary* still remains one of a handful of feature films that casts intellectually disabled actors as the principal lead characters. We could not possibly have imagined that the depiction of a loving, consensual, sexual relationship between Larry and Sophie would continue to inspire and provoke national discourse in 2025. Unlike Hollywood movies, sequels in contemporary theatre are rare. *'Finding Sophie'* (written by O'Reilly, produced by Decadent Theatre Company) world premiered at the Town Hall Theatre Galway in September, some thirteen years later than its predecessor, with Charlene Kelly and Kieran Copping reprising their roles of Sophie and Larry.



Funded by our Workability Project; Spotlight plays an important role in supporting our actors by increasing their visibility within the professional casting industry, while Equity helps affirm their rightful place among working actors, ensuring they were recognised, represented and have the same opportunities and protections as any professional performer.

About Spotlight



Spotlight Directory exists to connect theatre directors and casting directors with actors and has become the heart of a global network for talent discovery and to make the sector as inclusive, diverse and fair as possible by expanding access and contributing to industry-shaping conversations and policies.

Irish Equity (*Branch of SIPTU*)



Irish Equity represents professionals in the live performance and theatre sector in Ireland. Membership is open to the many professional categories, from Actors, Theatre Directors, Designers right through to Stunt performers.

Membership brings with it a range of benefits including representation, advice, relevant services and other things of practical value that are aimed at supporting members throughout their career.

Membership also signifies pride and by holding an Equity card is an international symbol of professionalism in the sector.



Jennifer Cox



Kieran Coppinger



Paul Connolly



Michael Hayes



Charlene Kelly



Cathal Scott Reynolds



Valerie Egan



Cormac Crawford



Jack Walsh



Roisin Walsh



Grace O'Brien

Individual actors' pages have been added to our website. The pages are accessible on the *ensemble's* main page via the gallery captured above. Casting directors and agents can view their show reels and credits and/or click through to their spotlight page.



COMPANY BUSINESS

We understand the need for transparency when it comes to stakeholders and funders, to reassure public confidence about the way in which their money is managed and where money will be spent.

Our Board ensures that Blue Teapot is properly managed and remains solvent. Financial Statement of accounts are independently audited and filed with the Companies Registration Office and submitted to The Charities Regulator.



GOVERNANCE

CRO: 471758

CRN 20071912 / CHY 18643

REVENUE: 9709656J

At the AGM held Wednesday 2nd July 2025, serving Directors Anthony Casey, Fiona Coffey and Eilish O'Sullivan resigned, whereby Fiona Coffey and Eilish O'Sullivan were reinstated.

In October, two new Directors, Dermot Nolan and Tom Meskell, were appointed to the Board.

Serving Directors numbered nine on the Board with additional seven members of the company.

From January to August, the company maintained a core staff team of nine part-time employees and supported by four community employment scheme workers and volunteers.

In September, six freelance tutors were recruited as employees, bringing the total of part-time employees to fifteen. One employee is seconded from Corlann West (formerly Brothers of Charity Services Ireland- West Region) as de facto CEO.



GOVERNANCE

As a registered charity, the Board of Blue Teapot Theatre Company is committed to the six principles of **The Charities Governance Code** and meets the core standards, annually declaring our compliance when submitting our annual return to the Charities Regulator.

Principles of The Charities Governance Code

1. Advancing the Charitable Purpose
2. Behaving with integrity
3. Leading people within the charity
4. Exercising control over the charity
5. Working effectively.
6. Being accountable and transparent

The Charities Regulator requires us to complete a Governance Code Compliance Record Form every year, which records actions and evidence that we must take.

The Principles of The Compliance Record Form is a standing agenda item at every Board meeting and Directors review each one in turn along with the Risk Register.

2025 FINANCIAL STATEMENT

A close-up photograph of a hand holding a white piggy bank. The piggy bank is a simple, stylized pig with a large snout and small ears. The background is dark and out of focus, showing what appears to be a person's arm in a blue sleeve.

PRINCIPAL ACTIVITY & REVIEW OF BUSINESS

The main objective for which the company is established is to benefit and advance education and participation in the arts in the county of Galway as defined in the Arts Acts 1951, 1973, and 2003.

We do this through the operation of a Theatre Company and performing arts education to promote inclusion, social development and the artistic expression of people with intellectual disabilities.

2025 turnover was €772,208

Income resources are made up of an annual service level agreement with principle funder Corlann West, government and local authority grants, some conditional of specific performance deliverables, some unconditional but intended for the company and charitable purpose of which we exist.

Expenditure is occurred for delivery of services for our beneficiaries and core activities as identified in our current Strategic Arts Plan. Restricted funds represent certain funders and use of grants for particular activities. These are all aligned for our charitable purposes and main objective.

The full set, audited Financial Statement along with this Annual Report is publicly available on our website - blueteapot.ie/governance



FUNDERS

Blue Teapot complies with various disclosure requirements of statutory funders in respect of relevant circulars such as with transparency and accountability standards set out in Department of Public Expenditure and Reform Circular 13/2014 *Management of and Accountability for Grants from Exchequer Funds*.

STATE FUNDING Received and Spent in Financial Year

Agency: Pobal: €82,204.87

Purpose : Workability: *Inclusive Pathways to Employment Programme*. Total award over the five-year life span of the programme is €397,863 which began in January 2024. The Workability Programme is co-funded by the Government of Ireland and the European Union and is administrated by Pobal.

Corlann (formerly Brothers of Charity Services Ireland – West Region)

Purpose: Service Level Agreement of Principal Agent Agreement €483,117

Galway Roscommon Education and Training Board:

Purpose: Back to Education Initiative that supports programme delivery of vocational training, leading to certification of QQI Awards. €37,500

Local Authority Grants from Galway City Council

- Purpose: Arts Grant – research and development of a new theatre project: €7,000
- Local Enhancement Programme: Purchase of assets (disability aids & IT): €3,460
- Culture Night 2025– grant for public exhibition of works: €1,128
- Social Inclusion Grant: Facilitation classes for Performing Arts School and Community Theatre Programme: €1000
- Healthy Galway City: Masterclasses and gym sessions: €2,500.

National Lottery HSE Grant: €3,000

Purpose: Programme delivery to Performing Arts School and Community Theatre

Tickets Now On Sale

Galway Executive Skillnet

BiG*

Leaders Summit



Niall Brestin
Transformational Speaker



Margaret Cox
MC

Platinum Sponsors







Thursday
29 May, 2025



Start From
08:30am

Get Your Ticket Today

-  Individual Booking - €25
-  Table Booking - €160

Ticket Sales Supporting
Our Charity Partner



Blue Teapot
Theatre Company

Galway Executive Skillnet is a charity funded by Skillnet Ireland and network companies. Skillnet Ireland is funded from the National Training Fund and the European Union through the Modernisation Fund for Higher Education, Research, Innovation and Lifelong Learning.

Skillnet  Minister of Education  Co-funded by the European Union

FUNDRAISING & DONORS

We are deeply thankful and blessed to benefit from many individuals and external fundraisers that contributed to earned income and helped exceed fundraising targets in 2025. Gratitude goes to all funders and donors who enabled our service provision throughout 2025.

The Ireland Funds' *Heart of The Community Fund 2024* awarded €10,000 towards an external evaluation report of *Fairy Tree* project (which was completed in 2025).

Fundraising Events

- The annual Christmas Swim raised €4,065 by families, friends and connections of our beneficiaries.
- We were a charity beneficiary of the annual City of Galway Mayor's Ball, which donated €5,000.
- Corporate event *BiG Leaders Summit* was held in May 2025 by Galway Executive Skillnet which raised €6,125.
- Many individuals gave once off donations totalling €3,620 which exceeded our overall 2025 fundraising target.



Gwenda Francis (bottom row, third from left), Medtronic's ABLED Employee Resource Group (ERG) lead and her wonderful team of volunteers painted our building last summer.



Let's be Friends

Blue Teapot Friends Scheme was launched with varying levels of support available from individual donors to corporate sponsorship. In 2025, we were delighted to on-board business sponsors Bon Secours Hospital Galway, Galway Taverns Ltd (The King's Head), ICE Group and Galway Executive Skillnet. Brendan Macken joined as a member of our Chorus.

By becoming a Friend of Blue Teapot, you will play a part in our future, directly supporting the artistic work we do, radically transforming theatre practices by telling stories through the lens of disability, creating a world where the arts and society are fully inclusive for people with disability.

There are 4 levels of engagement:

- In the Chorus:** Annual subscription €100+
- Supporting Role:** Annual subscription €500+
- Rising Star:** Annual subscription €1,000+
- Leading role:** Annual subscription €5,000+

Blue Teapot is an authorised body under the Charitable Donation Scheme with tax relief available on annual donations above €250.

Let's talk, If you would like more information or to discuss the Blue Teapot Friends scheme please contact Jane Parsons - exec.director@blueteapot

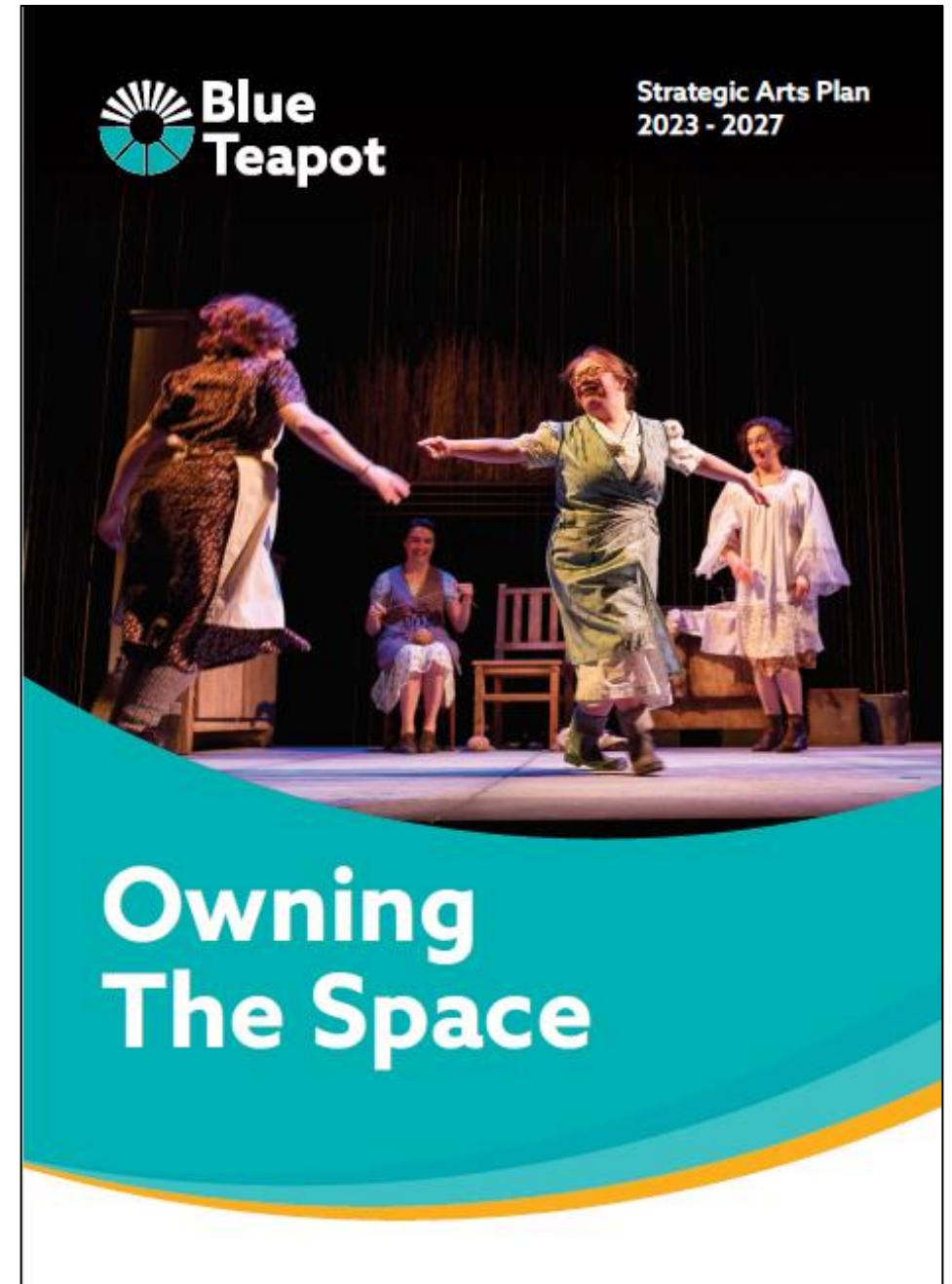


STRATEGIC ARTS PLAN 2023-2027

Owning The Space is our first Strategic Arts Plan and sets out our vision for the five years. The plan is built on three key priorities of **Production, Progression** and **Provision** and is a response to the positive development of disability arts in Ireland over the last 20 years. Creating the strategy took two years involving company artists, staff, freelance tutors and Board and developed in consultation with arts advisor & cultural planning specialist Mary McAuliffe.

"The Board of Blue Teapot is delighted to be presenting such a visionary and progressive Strategic Arts Plan. Delivering on its goals and objectives will nurture and progress the skills and talents of the company artists and help inform arts and disability policy in Ireland. We look forward to ambitious and exciting times ahead." - Chairperson Fiona Coffey,

Owning The Space purposely aligns with the Government of Ireland Culture 2025 policy and the Arts Council's 10-year strategy Making Great Art Work. It informs the development and delivery of artistic programmes and shapes Blue Teapot's role as influencers in the longer-term for disability arts across Ireland. The plan is available to view/download at www.bluteapot.ie which includes accessibility controls for the visually impaired.





We have a strongly held ethos that people with an intellectual disability (ID), with the right supports, can make art on a par with mainstream artists.

We are committed to ensuring that the contribution ID artists make to Ireland's cultural life is recognised, valued and understood.

In 2025, our organisation benefitted 52 ID artists at varying stages of careers or interests – professional actors, performing arts students and community theatre participants - in achieving their individual potential through theatre, arts education and providing a guiding model for accessibility in the arts.

We Are Theatre Change Makers

Our Values

As a theatre company, we operate within a framework of legal and regulatory obligations and a range of codes of good practice. In addition, we are guided by a set of values that include:

A Commitment to Excellence



We promote freedom of thought and of expression to develop new ideas and new work and strive to achieve the highest artistic standards in the work we make and produce

A Belief in Equality



We are committed to equality, cultural rights, diversity in all its forms and the advancement of inclusive theatre practices

Dynamic and Sustainable



We are dynamic and adaptable and will evolve our business model to meet the changing needs of our company

Accountable and Transparent



We are open and accountable in our decision making and communicate respectfully with partners and stakeholders

Environmental Awareness



We will identify and take actions to improve our environmental practices



2025 FUNDERS



This project is co-funded by the Government of Ireland, through the Department of Social Protection, and the European Union.

2025 COMPANY

DIRECTORS

Fiona Coffey, Sean Conneally, Gerardine Lally, Anthony Casey (resigned July), Mary Seale O’Flaherty, James C Harrold, Eilish O’Sullivan, Mary Foyle, Orla Haddigan, Tom Meskell and Dermot Nolan

COMPANY MEMBERS

Lali Morris, Claude Madec, Noelle Burke, Ann Loughney, Michelle Kenny, Eamon Loughrey and Marina Moore.

CEO ARTISTIC DIRECTOR

Petal Pilley

EMPLOYEES

Sonja Brodie, Hillary Kavanagh, Ana Bella Alvarez, Jason Scott, Judith Wolf, Dave Donovan, Jane Parsons, Rebecca Malone, Andrew Diviney. *Tutors* - Fiona O’Dea, Brendan Savage, Judith Higgins, Mags Linnane, Janna Lindstrom and Midie Corcoran.

CLASSROOM ASSISTANTS

Michael Patrick Breen, Rosah Mangan, Barry Ryan and Anna Walsh.

VOLUNTEERS

Oonagh Hassett, Sharon Conacur, Paddy O’Connell

PROFESSIONAL SERVICES

Bernadette O’Brien (A.C.M.A C.G.M.A), MK Brazil (Auditors), Plato Now (Payroll), Federation of Voluntary Bodies (Pension Administration), IBEC.

FREELANCE TUTORS

Rod Goodall, Aine Lawless, Sinead Hackett, Catherine Collins (GRETB), Michael Patrick Breen, Train Station Gym, Rosah Mangan, Sarah O’Toole, Lucy Bleeker, Orla Kelly Smith, Martina Carey, Jay Molyneaux, Orla Kelly Smith, Enda Moran and Orla McGovern.

PAS PROGRAMME BOARD

Trish Cunningham, Mike Masterson, Jim Noone, Síomha Nee and Fiona O’Dea.

CAPTIONS & CREDITS

- Cover** Ensemble, Creative Expression with Enda Moran. *Image: Jason Scott*
- 3 Kieran Coppinger, *Fairy Tree*. *Image: Hillary Kavanagh*
- 4 Student Niamh Mitchell, Fairy Tree Sensory Tours. *Image: Hillary Kavanagh*
- 6 Jenny Cox, dance workshop with Fionnuala Doyle Wade . *Image: Jason Scott*
- 7 Roisin Walsh, R&D on the Burren, *Fools & Idiots*, a work in progress. *Image: Hillary Kavanagh*
- 8 Paul Connolly, R&D on the Burren, *Fools & Idiots*, a work in progress. *Image: Hillary Kavanagh*
- 9 Cormac Crawford, Petal Pilley & Roisin Walsh, acting for camera workshops. *Image: Hillary Kavanagh*
- 10 Cathal Scott Reynolds with Rosie, *Fairy Tree*. *Image: Hillary Kavanagh*
- 11 Jennifer Cox & *Ruthgar* (Paul Connolly), *Fairy Tree* poster. *Image: Andrew Downes*
- 12 Roisin Walsh & student Sinead Molloy, Sensory Tours *Fairy Tree*. *Image: Hillary Kavanagh*
- 14 Patrick Becker & Emer Macken, *A Midsummer Night's Dream*. *Image: Reg Gordon*
- 15 Jess Howard & Aoibhin O'Brien, PAS students. *Image: Hillary Kavanagh*
- 16 Aaron Keogh, Máire Connolly, Patricia Hayes, Mihailo Kovacevic and Mikey Kerin 2025 new students. *Image: Hillary Kavanagh*
Michael Breen, Rosah Mangan, Ana Alvarez, Dave Donovan, Midie Corcoran & Mags Linnane, all Performing Arts School. *Image: HK*
- 17 Faces of 15 years of the Performing Arts School. *Images: multiple. Graphic Design: Clair O'Brien*
- 18 Grace Hannon & James Wallace , PAS Students on sets during the filming of *Don't be so Winey!* *Image: Jason Scott*
- 19 Cast & Crew on set of *Don't be so Winey!* *Image: Hillary Kavanagh*
- 20 PAS students Aidan Cassidy, Anna Nic Lochlainn, Elva Fray, Lauren Cahill, Holly Glover and Ciarán Quinn with QQI External Authenticator Anne Higgins. *Image: Michael Patrick Breen*
- 21 Artwork by Elva Fray, PAS student. *Image: Hillary Kavanagh*
- 22 Holly Glover, Aidan Cassidy, Anna Nic Lochlainn, Elva Fray, Lauren Cahill and Ciarán Quinn PAS students. *Image: Hillary Kavanagh*
- 23 Caomihe McMahan, PAS student. *Image: Jason Scott*

CAPTIONS & CREDITS continued

- 24 Clockwise from top left, Niamh Mitchell PAS student with exhibition visitors; Stanlin Joy Hirang PAS alumnus with his parents; Mary Grace Best Lydon PAS alumnus with her portrait; Aoibhín O’Brien PAS student with her sister and friends; Caoimhe McMahon PAS alumnus with PAS Classroom assistant Rosah Mangan. *Images: Michael Patrick Breen & Joe Shaugnessy*
- 25 City of Galway Mayor Mike Cubbard with Jack Walsh, Grace Hannon, James Wallace, Caoimhe McMahon, Andrew Quinn and Maria Hannon at their graduation ceremony at The Mick Lally Theatre. *Image: Emilija Jefremova*
- 28 Rod Goodall, QQI Drama tutor and Jack Walsh PAS graduate. *Image: Emilija Jefremova*
- 29 Sinead Mannion & Lowry Lynch Director Midie Corcoran, Bright Soul. *Image: Hillary Kavanagh*
- 30 Bright Soul performer James Coughlan in *Lowry Lynch*. *Image: Hillary Kavanagh*
- 31 Aaron Keogh, Séan Fahy & Sean Monaghan in *Lowry Lynch*. *Image: Hillary Kavanagh*
- 32 Sean Monaghan, Maire Connolly, Ella Hannon & Aaron Keogh in *Lowry Lynch*. *Image: Hillary Kavanagh*
- 33 The Cast of *The King’s Call*, Sparkle. *Image: Hillary Kavanagh*
- 35 Adrian Carney, Sharon Conacur & Paddy O’Connell, *The King’s Call*. *Image: Hillary Kavanagh*
- 36 Eoghan Murphy, Ciara Tobin & Dougie De Jaeger, *The King’s Call*. *Image: Hillary Kavanagh*
- 37 Roisin Walsh & Sinead Molloy, Fairy Tree Ushers & Sensory Tours. *Image: Hillary Kavanagh*
- 38 See page for captions. *Images: multiple*
- 39 Pat McGrath, RTE interviewing Caoimhe McMahon. *Image: Ana Alvarez*
- 40 Dave Donovan, Aoibhín O’Brien & Emma Moran. *Fairy Tree Sensory Tours*. *Image: Hillary Kavanagh*
- 43 Stanlin Joy Hirang, PAS. *Image: Jason Scott*
- 44 Patrick Becker. *Image: Jason Scott*
- 45 Valerie Egan, *Waiting for Elvis*. *Image: Aengus McMahon*
- 49 Medtronic’s ABLED Employee Resource Group (ERG)
- 50 Val Baynes, Margaret Cox & Eamonn Molloy ICE Group with actors Roisin Walsh & Cormac Crawford. *Image: Jason Scott*
- 58 Elva Fray, PAS student, in rehearsals for her QQI Drama module. *Image: Hillary Kavanagh*



We *greatly appreciate* the funding agents, Government Departments, organisations and every individual who chooses to fund or nominate Blue Teapot as a beneficiary.

No matter how small or large the donation, we are so grateful.

Heartfelt Thank You.



Blue Teapot Theatre Company

Munster Avenue
Galway Ireland
H91 FVF8

+353 91 520 977

blueteapot.ie

